

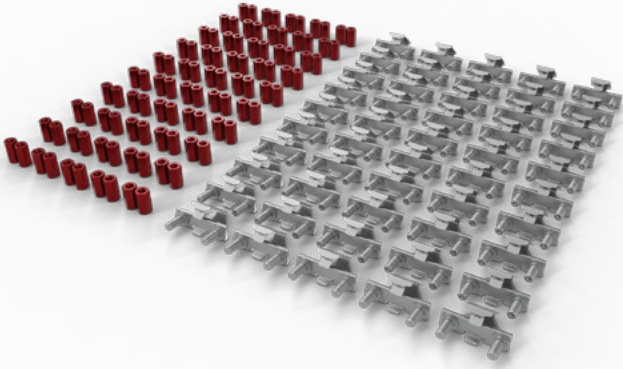


PATCHBOX

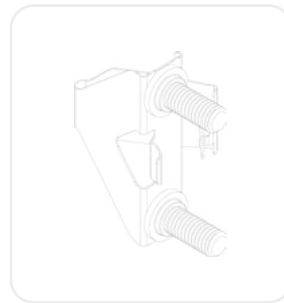
/dev/mount Tech Specs

/dev/mount

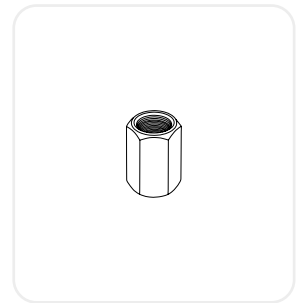
The /dev/mount is the fastest solution replacing conventional cage nuts used in server and network racks. Its faster mounting capabilities increases productivity of mounting 19" equipment. The /dev/mount holds equipment securely in place before the nuts are fastened, making hardware mounting a faster and more secure task.



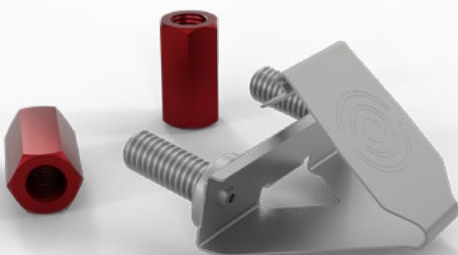
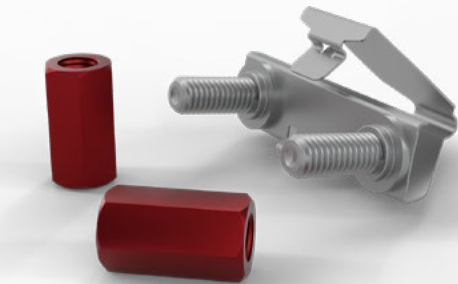
Items included



50x /dev/mount



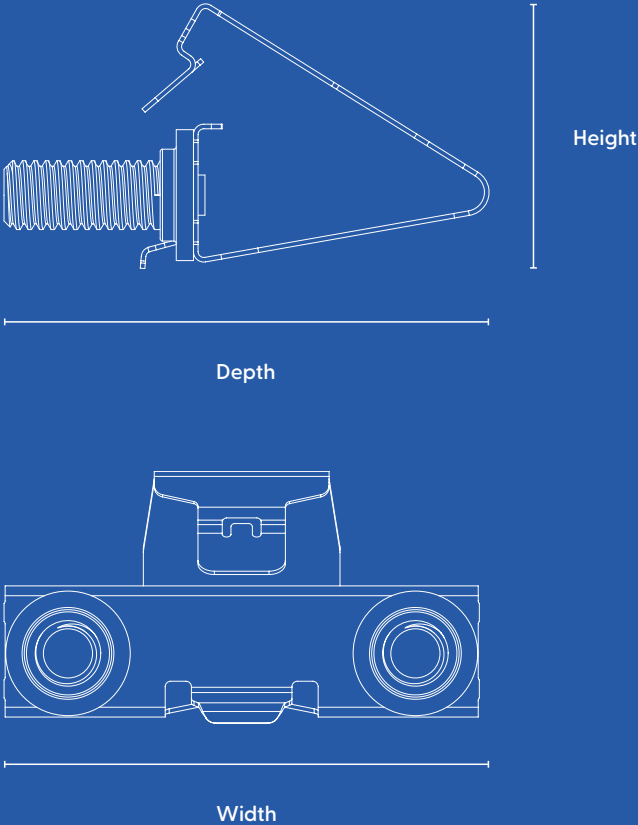
100x dual-sided / reversible hex nuts



Technical Information

Materials Stainless Steel	Ambient Humidity Non-Condensing 10% – 90%
Gross Weight 0.81 kg / 1.7 lbs	Operating Temperature Range -40°C – 100°C
Product Dimensions Width: 43.32mm Height: 21.54mm Depth: 42.22mm Width: 1,71 inch Height: 0,85 inch Depth: 1,66 inch	Packaging Dimensions Width: 240 mm Height: 70 mm Depth: 160 mm Width: 9,44 inch Height: 2,75 inch Depth: 6,29 inch
Max. load weight 200 kg / 440 lbs	Custom Tariff Number 73181900

Width: 43.32 mm / 1.71 in
Depth: 42.22 mm / 1.66 in
Height: 21.54 mm / 0.85 in





PATCHBOX GmbH
Handelskai 94-96 / 271
1200 Vienna / Austria

sales@patchbox.com
[+43 1 99 71 960](tel:+4319971960)

patchbox.com
shop.patchbox.com
