

A collection of VIVOTEK PoE products is displayed in the center-left of the image. This includes several PoE switches of different sizes, two white outdoor enclosures, two white dome cameras, and several small PoE injectors. The products are arranged on a blue, semi-transparent geometric overlay that covers the left side of the image.

# Empower Your IP Surveillance with VIVOTEK's Comprehensive PoE Solution

**PoE Solution**  
Long-range and smart delivery

**Outdoor Solution**  
Reliable and easy to install

**Enclosure**  
Unified design and multi-function

**IR Illuminator**  
Greater night vision and multiple FOV



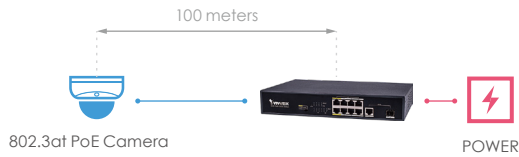
## PoE Solution - Unmanaged PoE Switch

**AW-FET-060C-065/100C-120**  
**AW-FGT-100C-120/180C-250**  
**AW-FGT-260C-380**

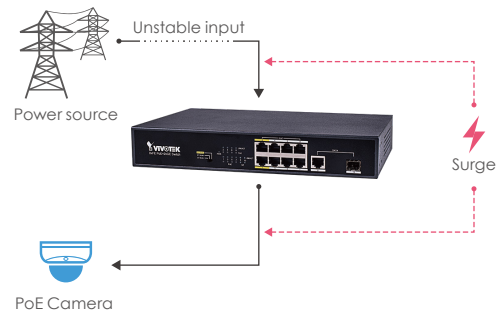
- PoE output Max. up to 30W
- Surge protection up to 12KV
- Extend PoE up to 200m on one single cable



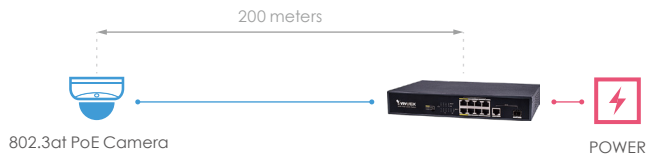
### • ST Mode



### • Surge Protection



### • EX Mode



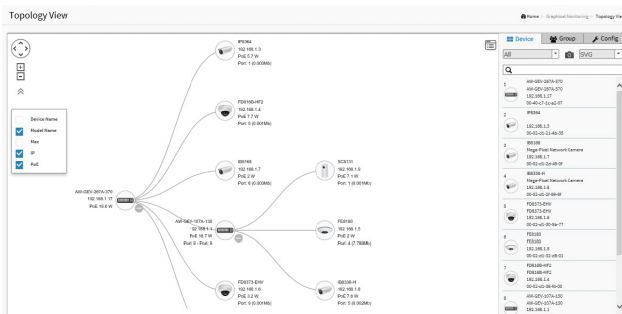
## PoE Solution - VivoCam L2+ PoE Switch

**AW-GEV-107A-130**  
**AW-GEV-267A-370**

- Visualized topology view with smart IP surveillance management
- Seamless integration with all VivoCam switches and VIVOTEK cameras
- Trouble shooting and cable diagnostics
- PoE on/off remote control
- Discovery ONVIF supported IP cameras



### • Topology View for IP Surveillance



### • Cable Diagnostics for Trouble Shooting

Diagnostics

Select	Status	Model Name	Device Name	MAC	IP Address	Version
<input checked="" type="checkbox"/>	Online	IB8168	Mega-Pixel Network Camera	00-02-D1-2D-45-0F	192.168.1.7	0100e

192.168.1.17 00-09-c7-1c-a2-07  
 Connection: ●  
 Cable status: ●

192.168.1.7 00-02-d1-2d-45-0f

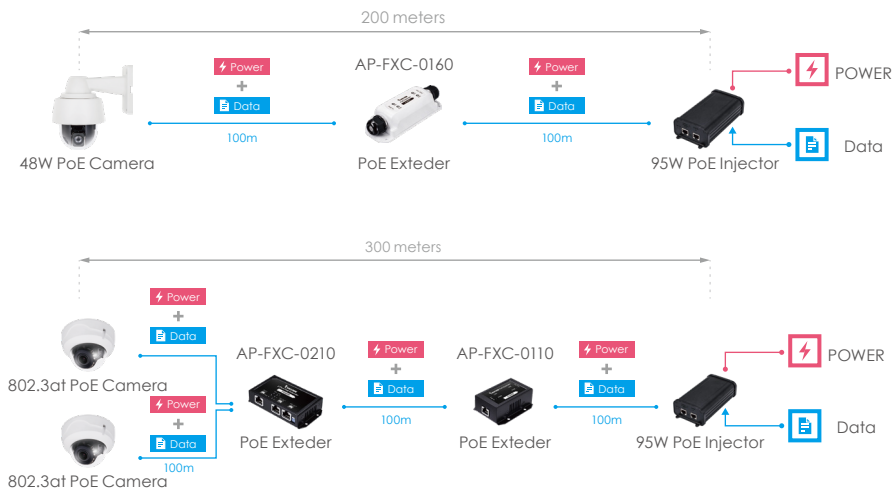
## PoE Solution - PoE Extender

### AP-FXC-0110/0210 AP-FXC-0160/0260

- Support to receive up to 95W PoE power from PSE
- Distance up to 300m with two devices cascaded
- Water proof IP67 and vandal proof IK10 rated housing (outdoor models)
- Wide temperature support (outdoor models)



#### • PoE Extender for Long Range Solution



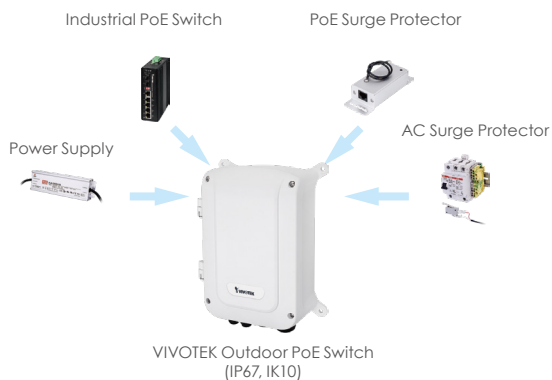
## Outdoor Solution - Outdoor Unmanaged PoE Switch

### AW-FET-053C-120 AW-FGT-103C-250

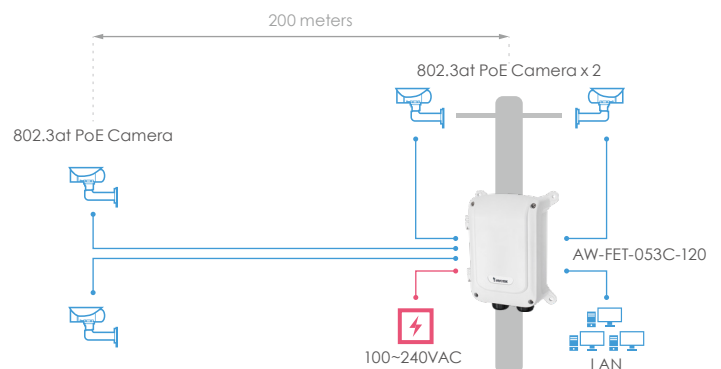
- Water proof IP67 and vandal proof IK10 rated housing
- AC surge protection up to 10KV/40KV
- PoE Port surge protection up to 12KV
- Extend Mode up to 200m on one single cable



#### • Plug-n-Play Installation with All-in-One Device



#### • EX Mode for Long Range Solution



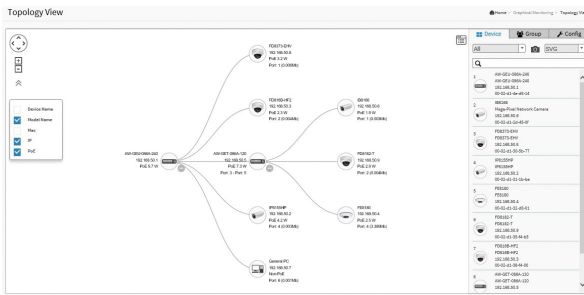
## Outdoor Solution - Outdoor VivoCam L2+ PoE Switch

### AW-GET-086A-120/126A-240 AW-GEU-086A-240

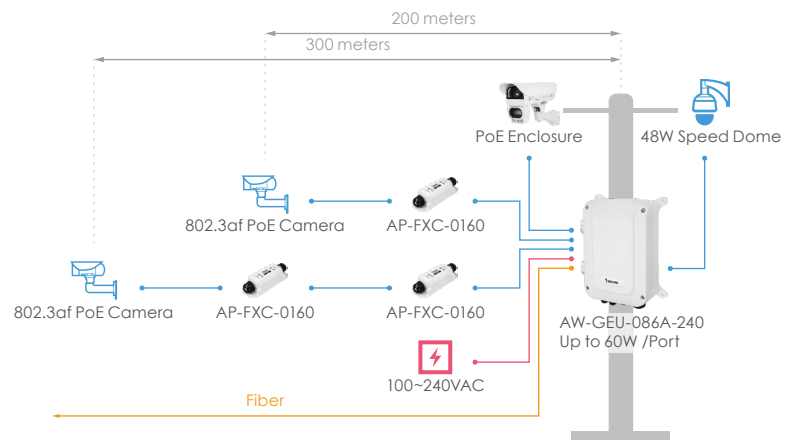
- Water proof IP67 and vandal proof IK10 rated housing
- Visualized topology views with smart IP surveillance management
- Seamless integration with all VivoCam switches and VIVOTEK cameras
- Trouble shooting and cable diagnostics
- PoE on/off remote control
- Discovery ONVIF supported IP cameras



#### • Topology View for IP Surveillance



#### • Outdoor Long Range PoE Solution

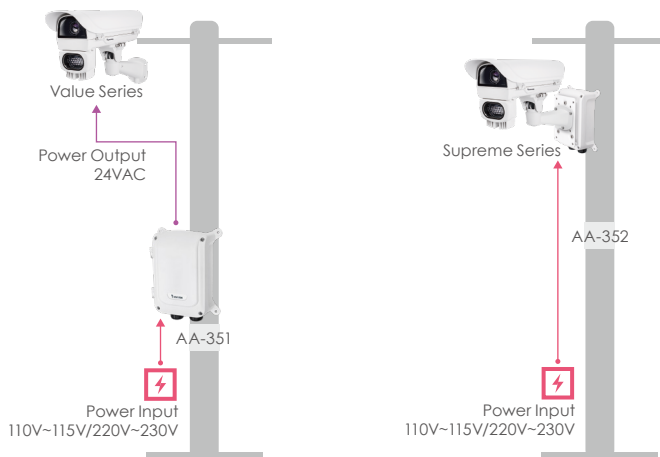


## Outdoor Solution - Power Box

### AA-351 AA-352

- 24VAC/6A power output
- Water proof IP67 and vandal proof IK10 rated housing
- Wide temperature support

#### • Power Supply for Outdoor Solution



Support Model
Enclosure
Value Series: AE-238, AE-243 Supreme Series: AE-23A, AE-23B, AE-23C, AE-23D
Cameras
SD9361-EHL, SD9362-EH(L), SD9365-EHL, SD9366-EH(L), IP816A-LPC-v2 Kit



## Enclosure - Supreme Series

### AE-23A/23B/23C

### AE-23D/23E/23F

- Water proof IP66/IP68 and vandal proof IK10 rated housing
- Wide temperature support (AE-23C/D)
- Power input for AC & PoE
- Snap in IR illuminator with variable field of view from 10° ~ 40° and viewing range up to 250m
- Adjustable beam angle by RS485 remotely via camera web UI



#### • Unified Design and Multi-function Outdoor Enclosure for All Applications



City



Campus



Factory



Traffic Monitoring

## IR Illuminator - CaMate

### CM48 Series CA80 Series

- Variable field of view 10° ~ 180°
- Adjustable beam angle up to 350m
- Adjustable light sensitivity via RS485 command
- Water proof IP68 and vandal proof IK10 rated housing
- Control beam angle and IR power via RS485 command
- Extreme weather support

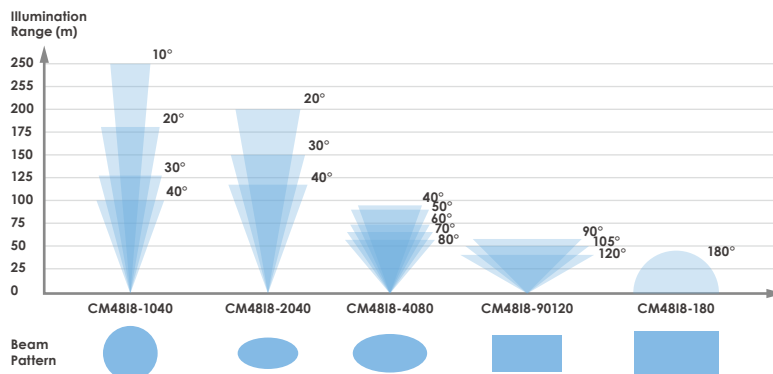


#### • High Intensity and Uniform IR Illumination

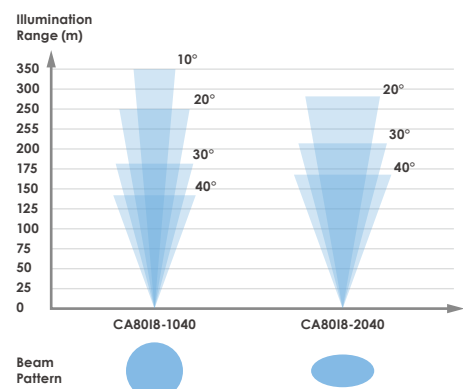


Support Model
Cameras
IP816A-LPC-v2 Kit

#### • Illumination Map - CM48 Series



#### • Illumination Map - CA80 Series





## Recommend Products

Unmanaged PoE Switch		
	Model Name	Product Description
	AW-FET-060C-065	4x FE PoE+ & 2x FE UTP PoE Switch
	AW-FET-100C-120	8x FE PoE+ & 2x FE UTP PoE Switch
	AW-FGT-100C-120	8xFE PoE+ & 1x GE UTP & 1xGE SFP PoE Switch
	AW-FGT-180C-250	16x FE PoE+ & 2x GE Combo port PoE Switch
	AW-FGT-260C-380	24x FE PoE+ & 2x GE Combo port PoE Switch
VivoCam L2+ PoE Switch		
	AW-GEV-107A-130	8x GE PoE+ & 2x GE Combo & 1xRJ45 Console PoE Switch
	AW-GEV-267A-370	24x GE PoE+ & 2x GE Combo & 1xRJ45 Console PoE Switch
PoE Extender		
	AP-FXC-0110	Indoor 1x FE PoE Extender, Power Input up to 95W
	AP-FXC-0210	Indoor 2x FE PoE Extender, Power Input up to 95W
	AP-FXC-0160	Outdoor 1x FE PoE Extender, Power Input up to 95W
	AP-FXC-0260	Outdoor 2x FE PoE Extender, Power Input up to 95W
Outdoor Unmanaged PoE Switch		
	AW-FET-053C-120	4x FE PoE+ & 1x FE UTP PoE Switch
	AW-FGT-103C-250	8x FE PoE+ & 2x GE Combo PoE Switch
Outdoor VivoCam L2+ PoE Switch		
	AW-GET-086A-120	Outdoor Industrial 4x GE PoE & 2x GE UTP & 2x GE SFP L2+ Managed Switch, 120W, -40°C ~ 65°C
	AW-GEU-086A-240	Outdoor Industrial 4x GE UPoE & 2x GE UTP & 2x GE SFP L2+ Managed Switch, 240W, -40°C ~ 65°C
	AW-GET-126A-240	Outdoor Industrial 8x GE PoE & 4xGE SFP L2+ Managed Switch, 240W, -40°C ~ 65°C

## Recommend Products

Power Box		
	Model Name	Product Description
	AA-351	IP67, IK10, 110/230VAC input, 24V output Power Box
	AA-352	IP67, IK10, 110/230VAC input, 24V output Power Box with wall bracket mountable
Enclosure - Supreme Series		
	AE-23A	Aluminum camera housing with optional IR LED, 24VAC input, IP68, IK10, Wall mount bracket and sun shield included
	AE-23B*	Aluminum camera housing with optional IR LED, 24VAC input, IP66, IK10, wiper
	AE-23C*	Aluminum camera housing with optional IR LED, 24VAC input, IP68, IK10, -50°C ~ 60°C
	AE-23D*	Aluminum camera housing with optional IR LED, 24VAC input, IP66, IK10, wiper, -50°C ~ 60°C
	AE-23E	Aluminum camera housing with optional IR LED, PoE input, IP68, IK10, Wall mount bracket and sun shield included
	AE-23F*	Aluminum camera housing with optional IR LED, PoE input, IP66, IK10, wiper
	AI-106	6 W IR LED with VAIR, 850nm, beam angle from 10° ~ 40°, up to 100m
	AI-108	24 W IR LED with VAIR, 850nm, beam angle from 10° ~ 30°, up to 160m
	AI-109	48 W IR LED with VAIR, 850nm, beam angle from 10° ~ 30°, up to 250m
CaMate Illuminators		
	CM48 Series	48W CaMate with VAIR, 850nm, beam angle from 10° ~ 180°, up to 250m
	CA80 Series	80W CaMate with VAIR, 850nm, beam angle from 10° ~ 40° remotely by control & RS485, up to 350m

\* Available by project request.

All specifications are subject to change without notice.  
© VIVOTEK INC. All rights reserved. Ver. 1

VIVOTEK INC.

6F, No.192, Lien-Cheng Rd., Chung-Ho, New Taipei City, 23553 Taiwan | T: +886 2 8245 5282 | F: +886 2 8245 5532 | E: sales@vivotek.com