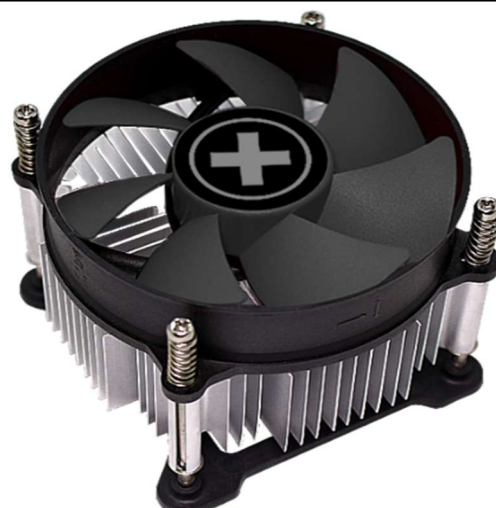


## Intel CPU Cooler I350PWM.B

In addition to the red version, the Xilence product portfolio is being expanded to include the black I350PWM.B cooler. Known for its high airflow and excellent price-performance ratio, the I350PWM.B ensures reliable and efficient cooling of modern Intel CPUs.

Thanks to hydro-bearing and PWM control, the black 92mm fan is particularly quiet and optimally adjusts its speed to the respective load. Stable mounting with a backplate ensures a secure hold and lasting performance. With its compact design and a TDP of up to 110 W, the cooler is ideal for powerful Intel processors in everyday use.



## Product Features

- Quiet, fluid-bearing 92mm PWM fan
- Fine aluminum fins for high airflow and efficient cooling
- Secure and stable mounting thanks to the backplate
- Suitable for current Intel CPUs
- Includes pre-applied thermal paste

## Technical Data

Sockets	LGA 1954, LGA 1851, LGA 1700
CPU max. Watt	110W
Fan Size	92 x 92 x 25mm
Fan Speed	800 ~2500 ± 10% RPM
Air Flow	42.25CFM
Fan Control	PWM
Noise Level	17.6~26.4db(A)
Thermal Paste	✓
Dimensions (H/W/D)	92 x 95 x 69,5mm
Weight	403g

## Logistical Data

Manufacturer Number	I350PWM.B
Item Number	XC332
EAN Barcode	4044953504495