



Simply Better Connections

UC2322 / UC2324

USB-to-Serial RS232 Hub
User Manual

Compliance Statements

FEDERAL COMMUNICATIONS COMMISSION INTERFERENCE STATEMENT

This equipment has been tested and found to comply with the limits for a Class B digital service, pursuant to Part 15 of the FCC rules. These limits are designed to provide reasonable protection against harmful interference in a residential installation. Any changes or modifications made to this equipment may void the user's authority to operate this equipment. This equipment generates, uses, and can radiate radio frequency energy. If not installed and used in accordance with the instructions, may cause harmful interference to radio communications. However, there is no guarantee that interference will not occur in a particular installation. If this equipment does cause harmful interference to radio or television reception, which can be determined by turning the equipment off and on, the user is encouraged to try to correct the interference by one or more of the following measures:

- ◆ Reorient or relocate the receiving antenna.
- ◆ Increase the separation between the equipment and receiver.
- ◆ Connect the equipment into an outlet on a circuit different from that to which the receiver is connected.
- ◆ Consult the dealer or an experienced radio/TV technician for help.

The device complies with Part 15 of the FCC Rules. Operation is subject to the following two conditions: (1) this device may not cause harmful interference, and (2) this device must accept any interference received, including interference that may cause undesired operation.

FCC Caution: Any changes or modifications not expressly approved by the party responsible for compliance could void the user's authority to operate this equipment.



KCC Statement

유선 제품용 / B 급 기기 (가정용 방송 통신 기기)
이 기기는 가정용 (B 급) 전자파적합기기로서 주로 가정에서 사용하는
것을 목적으로 하며, 모든 지역에서 사용할 수 있습니다.

Industry Canada Statement

This Class B digital apparatus complies with Canadian ICES-003.

CAN ICES-003 (B) / NMB-003 (B)

RoHS

This product is RoHS compliant.

ATEN USB-to-Serial RS-232 Hub User Manual

Online Registration

International	http://support.aten.com
---------------	---

Telephone Support

International	886-2-8692-6959
China	86-400-810-0-810
Japan	81-3-5615-5811
Korea	82-2-467-6789
North America	1-888-999-ATEN ext 4988 1-949-428-1111

Technical Support

- ◆ For international online technical support – including troubleshooting, documentation, and software updates:
<http://support.aten.com>
- ◆ For North American technical support:

Email Support		support@aten-usa.com
Online Technical Support	Troubleshooting Documentation Software Updates	http://support.aten.com
Telephone Support		1-888-999-ATEN ext 4988

Package Contents

The ATEN USB-to-Serial RS-232 Hub package contains the following items:

- ◆ 1 UC2322 / UC2324 USB-to-Serial RS-232 Hub
- ◆ 1 USB cable
- ◆ 1 user instructions

Check to make sure that all the components are present and that nothing got damaged in shipping. If you encounter a problem, contact your dealer.

Read this manual thoroughly and follow the installation and operation procedures carefully to prevent any damage to the unit, and/or any of the devices connected to it.

* Features may have been added to the ATEN USB-to-Serial RS-232 Hub since this manual was printed. Please visit our website to download the most up-to-date version of the manual.

Overview

The ATEN USB-to-Serial RS-232 Hub provides an external plug-and-play RS-232 serial connection for computers, notebooks, laptops, and hand-held computing devices that support the USB specification. It comes with 2 or 4 standard DB-9 male connectors for peripherals to plug into, and a USB cable for connecting to the computer's USB port, or to a USB hub.

There are two models in the ATEN USB-to-Serial RS-232 Hub series:

- ◆ UC2322 – 2-Port USB-to-Serial RS-232 Hub
- ◆ UC2324 – 4-Port USB-to-Serial RS-232 Hub

The ATEN USB-to-Serial RS-232 Hub provides mobile phones, PDAs, digital cameras, modems and ISDN terminal adapters with high quality serial connections at a data transfer rate of up to 115.2 Kbps. It makes the USB interface transparent to the peripherals, allowing them to easily interface with the USB, eliminating the setup hassle found with traditional serial port connections. As a USB specification compliant device, the ATEN USB-to-Serial RS-232 Hub also supports energy-saving suspend and resume operations.

The ATEN USB-to-Serial RS-232 Hub provides a quick, simple, and cost-effective solution and is ideal for various kinds of communication and automation applications.

Note: The ATEN USB-to-Serial RS-232 Hub does not support devices such as serial mice that require an IRQ number or I/O address.

Features

- ◆ Easy way to add 2 or 4 RS-232 serial ports
- ◆ Fully compliant with USB 1.1; USB 2.0 compatible
- ◆ Supports RS-232 serial interface
- ◆ Supports automatic handshake mode
- ◆ Up to 115.2 Kbps data transfer rate for each serial port
- ◆ Dual data buffers for each upstream and downstream data transfer
- ◆ No IRQ, DMA, I/O address resources required
- ◆ Supports hot-swapping and plug-and-play
- ◆ Built-in 16KV ESD protection
- ◆ Supports both bus power and external power
- ◆ Works with cellular phones, PDAs, digital cameras, modems and ISDN terminal adapters

Regulatory Approvals

Hardware	CE, FCC (Class B)
Driver	Microsoft WHQL

System Requirements

Computers

The driver must be installed on the host computer to be able to communicate with the connected USB peripheral devices.

Operating Systems

Supported operating systems are shown in the table, below:

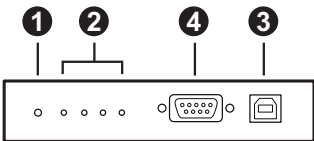
OS	Version
Windows	2000 or above

USB-to-Serial RS-232 Hub Front View

UC2322



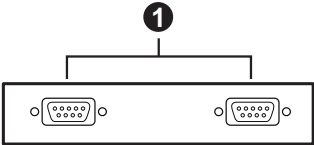
UC2324



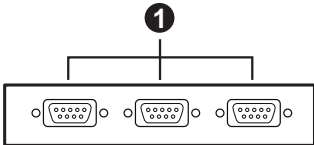
No.	Component	Description
1	power LED	Lights to indicate that the USB-to-Serial RS-232 hub is receiving power and is up and running.
2	port link LED	Lights to indicate that there is a working RS-232 connection to the corresponding port.
3	USB Type-B port	The USB cable from your computer or USB hub plugs in here.
4	RS-232 serial port (UC2324 only)	Your peripheral devices, such as digital cameras, scanners, PDAs, etc., plug in here.

USB-to-Serial RS-232 Hub Rear View

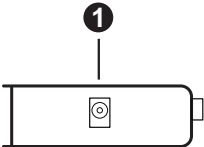
UC2322



UC2324



Side View



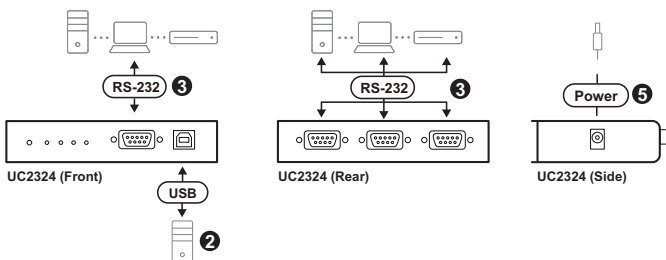
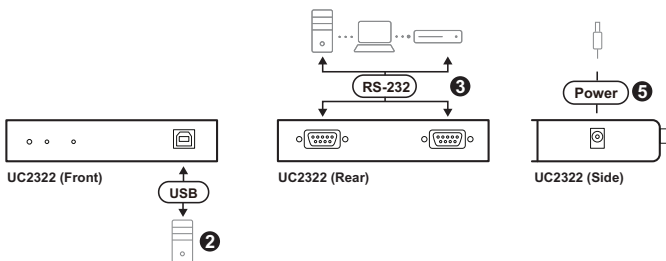
No.	Component	Description
1	RS-232 serial ports	Your peripheral devices, such as modems, scanners, PDAs, etc., plug in here.
2	power jack	The power adapter cable plugs in here. Note: The USB-to-Serial RS-232 hub is bus-powered, so the use of a power adapter is optional.

Installation



Make sure that all devices you will be installing are properly grounded.

Follow the steps below to connect the USB-to-Serial RS-232 Hub.



1. Install drivers.

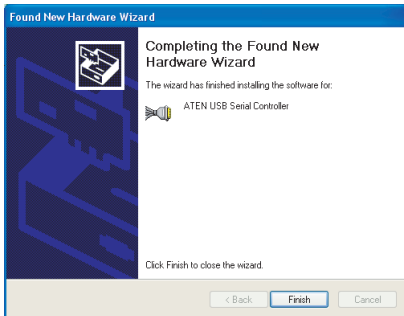
- Download the most up-to-date driver from our ATEN product web page and unzip the downloaded file.
- Select an appropriate operating system and system type that your computer supports.



- c) Double-click **MSSetup_ATEN**.
- d) In the pop-up dialog box, click **Install** to install the driver for the USB-to-Serial RS-232 Hub. To cancel the installation, click **Exit**.
- e) When the installation has completed, a dialog box appears.
- f) Click Exit to close the wizard, You have successfully installed the driver.

2. Connecting the USB-to-Serial RS-232 Hub.

- a) Connect the USB-to-Serial RS-232 Hub to a USB port on your computer using the USB cable provided. The New Hardware Wizard appears.
- b) Select **No, not this time**, and then click **Next** to continue.
- c) In the pop-up dialog box, leave the default choice (Install from the software automatically), and then click **Next** to continue.
- d) When the installation has completed, the following dialog box appears. Click Finish to close the wizard. You have successfully installed the USB-to-Serial RS-232 Hub.



3. Connecting your peripherals to the USB-to-Serial RS-232 Hub and follow the installation Wizard's on-screen instructions to complete the installation.

Note:

- ◆ Under Windows 2000 operating systems, if you connect a modem, you must specify the modem as a Standard modem.
 - ◆ This procedure only occurs the first time you connect the peripheral. If your peripheral was previously connected and configured for the COM port, after you perform the adapter installation and click **Finish**, the driver will connect it and install it automatically. However, some peripheral devices, such as older PDAs, require that you install the software for the peripheral device before it will work properly.
-

4. Turn on the connected devices.
5. (Optional) The USB-to-Serial RS-232 Hub is bus-powered. Optionally power the USB-to-Serial RS-232 Hub with a power adapter.

Uninstalling the Drivers

1. From the downloaded file, select an appropriate operating system and system type that your computer supports.



2. Double-click **ATEN_MSUninst**.
3. In the pop-up dialog box, click **OK** to begin the uninstall process.
4. Click **Exit**. You have successfully uninstalled the driver.

Specifications

Function		UC2322	UC2324
Device Connections		2	4
Connectors	USB	1 x USB Type B Female (White)	
	Serial	2 x DB-9 Male (Black)	4 x DB-9 Male (Black)
	Power	1 x DC Jack (Black)	
LEDs	Port	2 (Green)	4 (Green)
	Power	1 (Orange)	
Data Transfer Rate		115.2 Kbps (max.)	
FIFO		16 byte Hardware FIFO	
USB Specification		USB 1.1 Compliant; USB 2.0 Compatible	
RS-422/RS-485 Selection		N/A	
RS-232 Signal		TxD, RXD, RTS, CTS, DTR, DSR, DCD, RI, GND	
RS-422 Signal		N/A	
RS-485 Signal		N/A	
Data Bit		5, 6, 7, 8	
Stop Bit		1, 1.5, 2	
Power Mode		Bus Powered; use of Power Adapter is optional	
Power Consumption		0.5W	0.6W

Environment	Operating Temp.	0–50°C	
	Storage Temp.	-20–60°C	
	Humidity	0–80% RH, Non-condensing	
Physical Properties	Housing	Metal	
	Weight	0.30 kg	0.32 kg
	Dimensions (L x W x H)	12.50 x 8.15 x 2.50 cm	

DB-9 Pin Assignments

Pin	RS-232
1	DCD
2	RXD
3	TXD
4	DTR
5	GND
6	DSR
7	RTS
8	CTS
9	RI

Troubleshooting

Problem	Possible Cause	Action
Cannot install serial device.	Advanced settings need to be configured.	Contact ATEN Technical Support for advice about your specific serial device.

Limited Warranty

ATEN warrants its hardware in the country of purchase against flaws in materials and workmanship for a Warranty Period of two [2] years (warranty period may vary in certain regions/ countries) commencing on the date of original purchase. This warranty period includes the [LCD panel of ATEN LCD KVM switches](#). Select products are warranted for an additional year (see [A+ Warranty](#) for further details). Cables and accessories are not covered by the Standard Warranty.

What is covered by the Limited Hardware Warranty

ATEN will provide a repair service, without charge, during the Warranty Period. If a product is defective, ATEN will, at its discretion, have the option to (1) repair said product with new or repaired components, or (2) replace the entire product with an identical product or with a similar product which fulfills the same function as the defective product. Replaced products assume the warranty of the original product for the remaining period or a period of 90 days, whichever is longer. When the products or components are replaced, the replacing articles shall become customer property and the replaced articles shall become the property of ATEN.

To learn more about our warranty policies, please visit our website:

<http://www.aten.com/global/en/legal/policies/warranty-policy/>