



Datenblatt - Fiche technique - Data sheet

11.05.1010



Filter Ferrit-10

Filtre ferrite - 10mm

Filter Ferrite - 10 mm



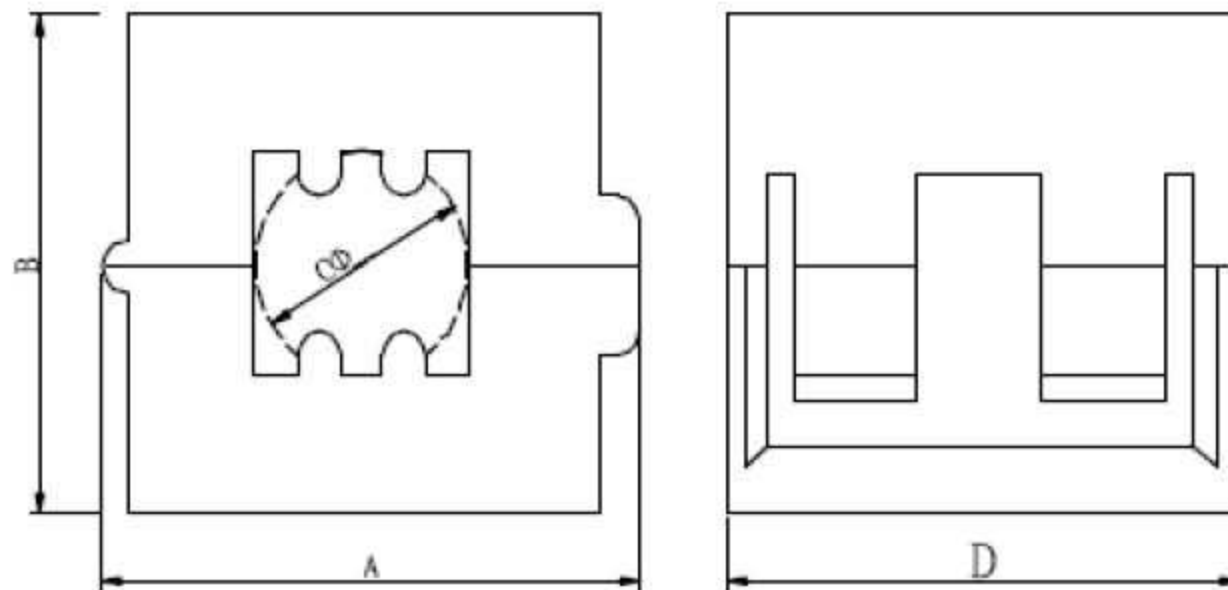
Item No.: 11.05.1010
Filter Ferrite 10mm



EMI suppressor Snap-on ferrite cores (for round cable)

| | |
|--------------------|--|
| FEATURE | <ul style="list-style-type: none"> Internal dimensions from 5mm to 15mm radius. Precision formed smooth surface prevent damage to wire insulation. Easy installation. |
| APPLICATION | <ul style="list-style-type: none"> Internal and external power cables. Internal cables between pc boards and data connectors, computer peripherals, digital camera, DVD, fax machine cables, monitor cables, power supply cables. Printer cables. |

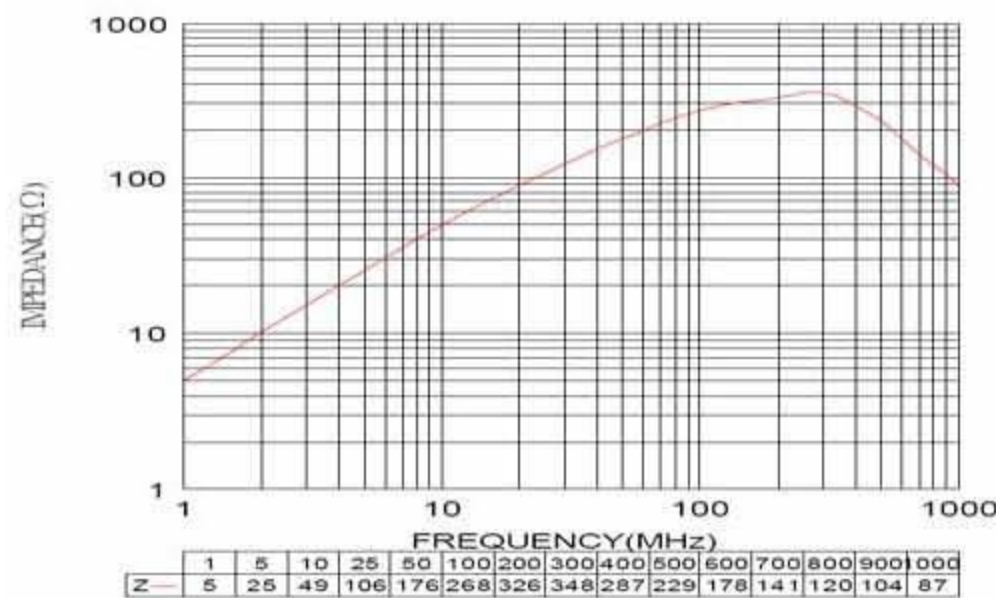
SHAPES (unit in mm)



Dimensions (Core Size) & Characteristics for LF series

| ITEM | A | B | C | D | IMPEDANCE (Ω) min | |
|------------|-----------|-----------|------------|----------|-------------------|--------|
| | | | | | 25MHz | 100MHz |
| 11.05.1010 | 25.50±1.0 | 23.50±1.0 | 10.00±0.30 | 33.0±1.0 | 95 | 120 |

(Z , RS , XL) - f Curve LF series



(DATA BETWEEN 500MHz AND 1000MHz ARE FOR REFERENCE ONLY)