



RX9401

H.265 4K Video Receiver



H.265/H.264 • 16CH • HDMI • ONVIF

VIVOTEK's RX9401 is an H.265 Single-Channel Ultra-HD Video Receiver. Delivering high-quality and detailed images, it is equipped for up to 16-CH network cameras and a maximum network camera resolution of 8-Megapixels. The RX9401 can drive an HD monitor directly via HDMI, and supports decode options of 4K 30 fps, four H.265 1080p 120 fps, nine H.265 720p 270 fps, or sixteen H.265 D1 480 fps. The RX9401 offers a more cost-effective and PC alternative solution with no costly VMS client fee, no HDD

noise and no failure issues. It is suitable for standalone viewers through local viewing. Secured and simplified IT management reduce the requirement for end user training, further reducing long-term costs.

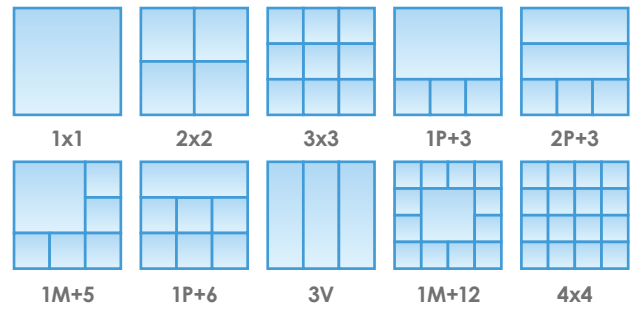
Key Features

- H.265/H.264 Compression Technology
- Up to 16 Channel IP Camera Input
- HDMI Video Output up to 4K Resolution
- Up to 8MP Camera
- One Button Auto Setup
- Fisheye Dewarp
- ONVIF Compliance (Project Support Function)
- Compact Size with Fanless Design
- Supports Various Split-window Layout Display Modes

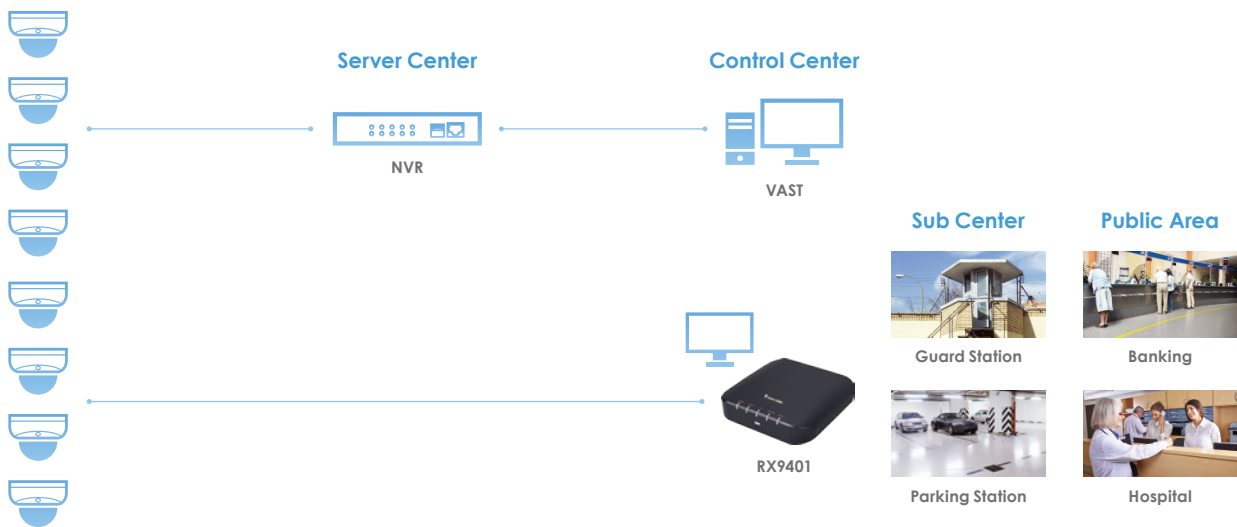
Highlight Features

Various Split-window Layout & Fisheye Dewarp Support

The RX9401 provides various split modes for layout display (1x1, 2x2, 3x3, 1P+3, 2P+3, 1M+5, 1P+6, 3V, 1M+12, 4x4) and supports VIVOTEK's fisheye camera Fisheye Dewarp function, which provides multiple dewarping modes to ensure the correct angle of video view and detailed information for flexible usage.



System Structure



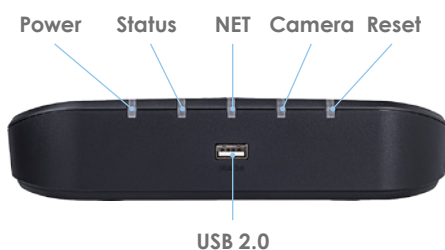
Product - Ordering Information

Model	Part Number
RX9401, AU	100178930G
RX9401, EU	100178910G
RX9401, JP	100178940G

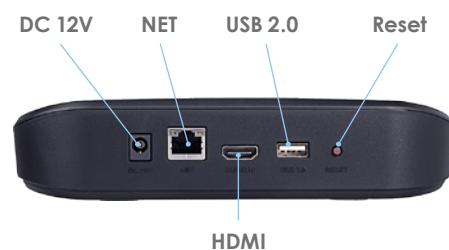
Model	Part Number
RX9401, UK	100178920G
RX9401, US	100178900G

Mechanical Information

Front View



Back View



Technical Specifications

Hardware Information

Model RX9401

System

OS Embedded Linux

CPU ARM Processor

Flash 256 MB

RAM 1GB

Watchdog Hardware + Software

Power Restoration System Restart Automatically after Power Recovery

Video & Audio

Video Output HDMI x1

Resolution 3840x2160, 1920x1080, 1280x720

Graphics Decoder Hardware decoding

Decoding Capacity
H.265/H.264:
3840x2160 @ 30 fps (1CH)
1920x1080 @ 120 fps (4CH)
1280x720 @ 270 fps (9CH)
720x480 @ 480 fps (16CH)

Camera Position Change the viewcell position on the Live View screens

External Interface

USB Interface Front: 1 (USB 2.0)
Back: 1 (USB 2.0)

Audio HDMI Audio Output

Network

Network Interface 10/100Mbps Ethernet (RJ-45) x 1

Protocols IPv4, TCP/IP, HTTP, HTTPS, UPnP, RTSP/RTP/RTCP, SMTP, DHCP, NTP, DNS, IP Filter

Power

Power Input DC 12V 1.5A

Power Consumption Max. 9.24 W

LED Indicator

LED Indicator Power, Status, NET, Camera, Reset

Mechanic

Form Factor Mini

Operation Buttons Reset (Back)

Dimensions 198 (W) x 200 (D) x 47 (H) mm

Weight 530 g

Operating Temperature 0°C ~ 40°C (32°F ~ 104°F)

Humidity 0 ~ 95%

General

Safety Certifications CE, LVD, FCC, VCCI, C-Tick

Warranty 24 months

Client PC Requirements

Operating System Microsoft Windows OS:
XP/Vista/7/8/10/2008/2012

CPU Intel Celeron or above

Memory 2 GB or above

Ethernet 10/100Mbps

Display Resolution 1024x768 pixels or above

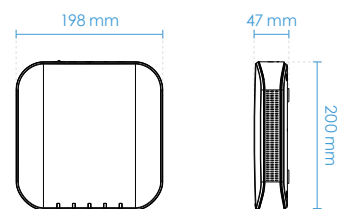
Web Browser Internet Explorer 10 (32 bit) or above

Software AP Installation Wizard 2, Shepherd

Accessories

Others Power adaptor, QIG, 1 x USB Mouse

Dimensions



Software Information

LiveView (Local Display)

Stream Application Constant/Auto Adaptive Stream

LiveView Display 16 Channels
Multiple Layout Display:
1x1, 2x2, 3x3, 1P+3, 2P+3, 1M+5, 1P+6, 3V, 1M+12, 4x4

Monitor Enhancement OSD Display (NVR), OSD Display (Camera), Camera Information, Aspect Ratio, Fisheye Dewarp (1O, 1P, 1R, 1O3R, 1P3R, 1O8R)

PTZ Control Panel Control/Joystick

PTZ Operation Direction Control, Home, Iris, Preset, Patrol (Group), PiP Control

Backup

Manual USB Dongle (FAT Format)

System

User Management User Account: 16
User Account Time Limit: 10 mins
User Level: Administrator

Date&Time Time Zone, Manual, Automatic Sync NTP, Daylight Saving Time

Technical Specifications

Firmware	Manual upgrade
Restore Default	Supported
Backup/Restore (Configuration)	Supported
Language	Czech, English, French, German, Italian, Japanese, Korean, Portuguese, Russian, Spanish, Simplified Chinese, Traditional Chinese, Polish

Camera Integration

Insert Camera	Manual, Search
ONVIF Core SPEC.	Version 2.2 or above (By Project)

ONVIF Stream	Video (H.264 & MJPEG)
ONVIF Discover	Discover other brand camera through "Insert Camera & Batch Insert"

Device Integration

Joystick	AJ-001, AJ-002
----------	----------------