



Datenblatt - Fiche technique - Data sheet

**21.17.0319**



ROLINE Kupplung MPO/MPO

ROLINE Coupleur MPO/MPO

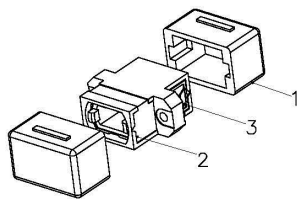
ROLINE MPO/MPO Coupler

## Item no.: 21.17.0319 ROLINE MPO/MPO Adapter, Black

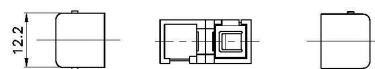
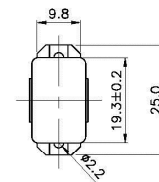
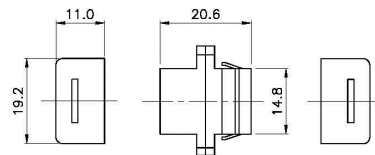


### Features:

- Compliant with IEC 61754-7 and TIA/EIA 604-5 intermateability standard
- Accepts industry standard MPO interfaces
- Opposited key and aligned key options available



SCALE 1/1



### Specification :

#### Material :

1. Dust Cover : TPR, Black color.
2. Housing : PBT, UL 94V-0, Black Color.
3. Clip : Stainless.

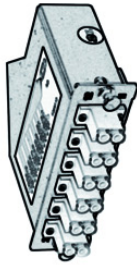
#### Performance :

- a. MPO to MPO Adaptor Type.
- b. Durability : 500 cycles.
- c. Tensile Strength : 10 kgf.
- d. Insertion Loss : < 0.3 dB.
- e. Operating Temperature : -20°C to +70°C.
- f. Storage Temperature: -40°C to +80°C.

**OM3 LC-LC  
(A-B)**



**MPO Module  
(12x LC-MPO male)**



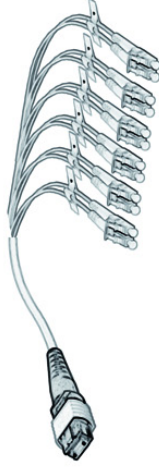
**MPO Trunk Cable  
(female-female)**



**MPO Coupler**



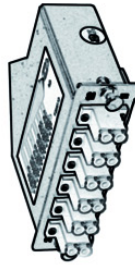
**MPO Fan-Out Cable  
(MPO male-12x LC)**



**OM3 LC-LC  
(A-B)**



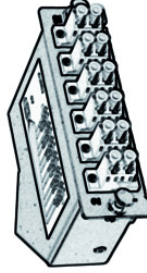
**MPO Module  
(12x LC-MPO male)**



**MPO Trunk Cable  
(female-female)**



**MPO Module  
(MPO male-12x LC)**



**OM3 LC-LC  
(A-A)**

