



Datenblatt - Fiche technique - Data sheet

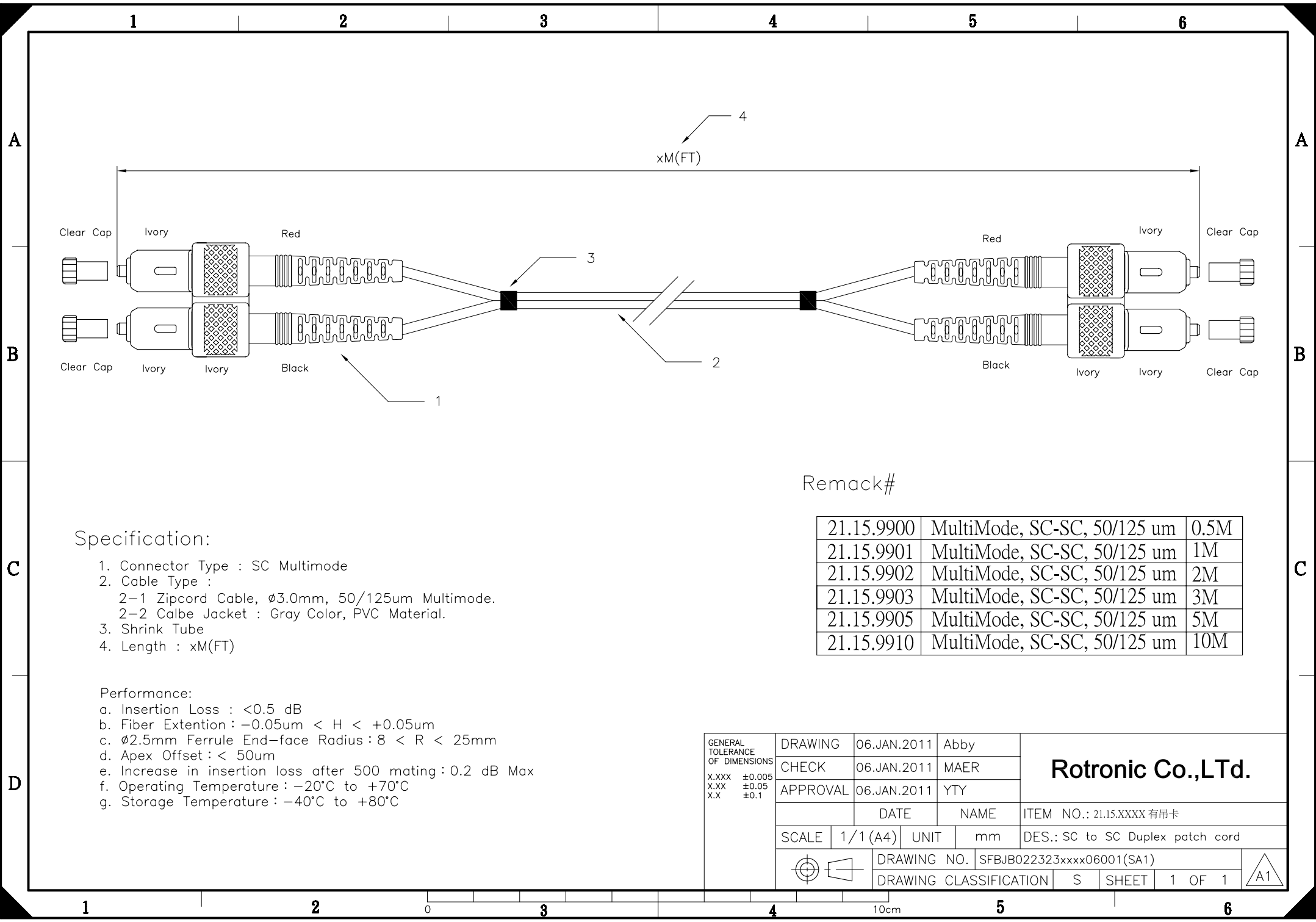
21.15.9905



ROLINE LWL-Kabel 50/125 μ m SC/SC, grau, 5m

ROLINE Câble patch FO 50/125 μ m SC/SC, gris, 5m

ROLINE Fibre Optic Jumper Cable 50/125 μ m SC/SC, grey, 5 m



Remack#

| | | |
|------------|-----------------------------|------|
| 21.15.9900 | MultiMode, SC-SC, 50/125 um | 0.5M |
| 21.15.9901 | MultiMode, SC-SC, 50/125 um | 1M |
| 21.15.9902 | MultiMode, SC-SC, 50/125 um | 2M |
| 21.15.9903 | MultiMode, SC-SC, 50/125 um | 3M |
| 21.15.9905 | MultiMode, SC-SC, 50/125 um | 5M |
| 21.15.9910 | MultiMode, SC-SC, 50/125 um | 10M |

Specification:

1. Connector Type : SC Multimode
2. Cable Type :
2-1 Zipcord Cable, ϕ 3.0mm, 50/125um Multimode.
2-2 Calbe Jacket : Gray Color, PVC Material.
3. Shrink Tube
4. Length : xM(FT)

Performance:

- a. Insertion Loss : <0.5 dB
- b. Fiber Extention : $-0.05\mu\text{m} < H < +0.05\mu\text{m}$
- c. ϕ 2.5mm Ferrule End-face Radius : $8 < R < 25\text{mm}$
- d. Apex Offset : < 50 μm
- e. Increase in insertion loss after 500 mating : 0.2 dB Max
- f. Operating Temperature : -20°C to $+70^{\circ}\text{C}$
- g. Storage Temperature : -40°C to $+80^{\circ}\text{C}$

| | | | | |
|--|------------------------|---------------------------|--------------|----------------------------------|
| GENERAL TOLERANCE OF DIMENSIONS X.XXX \pm 0.005 X.XX \pm 0.05 X.X \pm 0.1 | DRAWING | 06.JAN.2011 | Abby | Rotronic Co.,LTd. |
| | CHECK | 06.JAN.2011 | MAER | |
| | APPROVAL | 06.JAN.2011 | YTY | |
| | | DATE | NAME | ITEM NO.: 21.15.XXXX 有吊卡 |
| SCALE | 1/1 (A4) | UNIT | mm | DES.: SC to SC Duplex patch cord |
| | DRAWING NO. | SFBJB022323xxxx06001(SA1) | | A1 |
| | DRAWING CLASSIFICATION | S | SHEET 1 OF 1 | |