



Datenblatt - Fiche technique - Data sheet

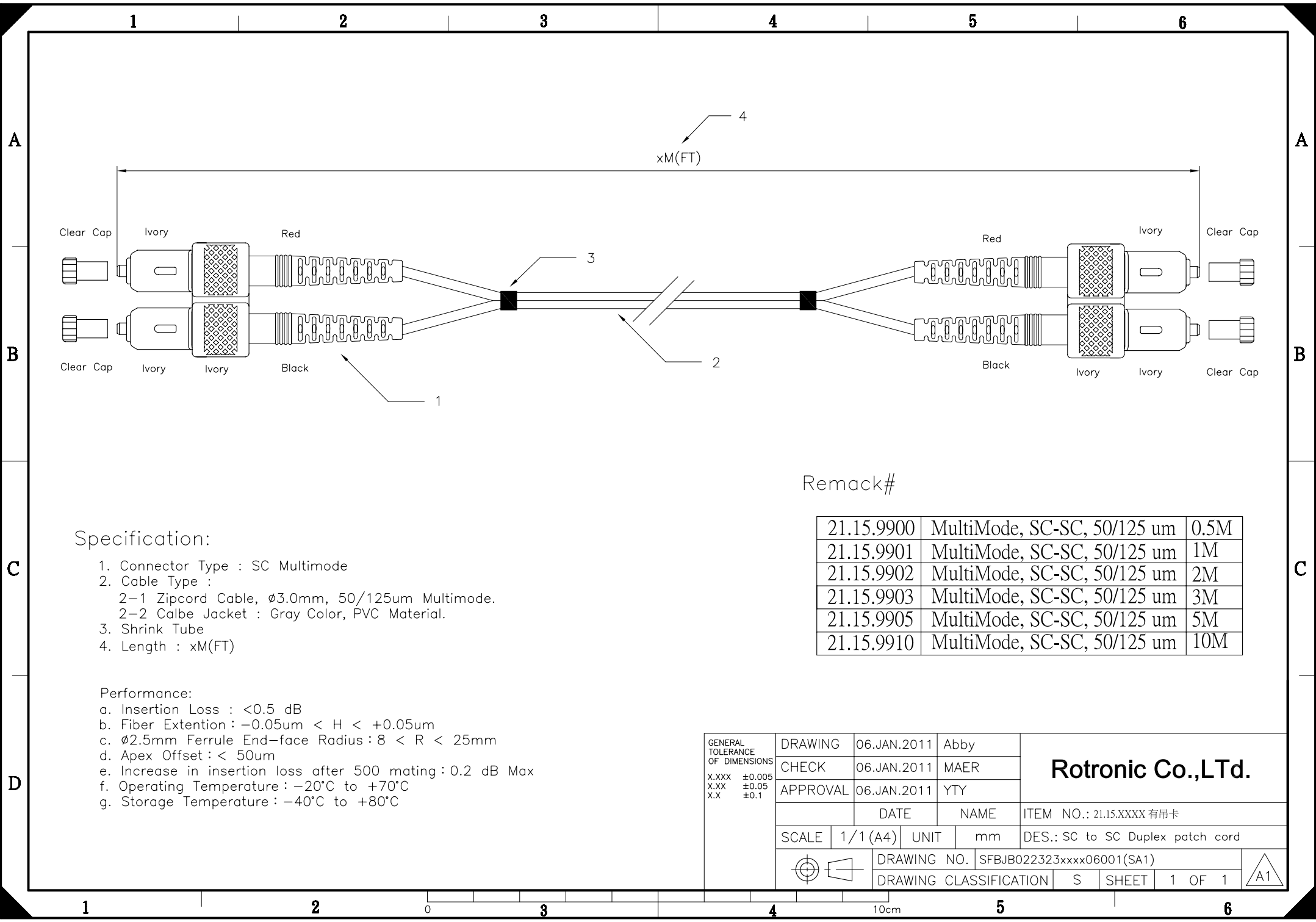
**21.15.9900**



ROLINE LWL-Kabel 50/125 $\mu$ m SC/SC, grau, 0,5m

ROLINE Câble patch FO 50/125 $\mu$ m SC/SC, gris, 0,5m

ROLINE Fibre Optic Jumper Cable 50/125 $\mu$ m SC/SC, grey, 0.5 m



Remack#

21.15.9900	MultiMode, SC-SC, 50/125 um	0.5M
21.15.9901	MultiMode, SC-SC, 50/125 um	1M
21.15.9902	MultiMode, SC-SC, 50/125 um	2M
21.15.9903	MultiMode, SC-SC, 50/125 um	3M
21.15.9905	MultiMode, SC-SC, 50/125 um	5M
21.15.9910	MultiMode, SC-SC, 50/125 um	10M

Specification:

1. Connector Type : SC Multimode
2. Cable Type :
  - 2-1 Zipcord Cable,  $\phi$ 3.0mm, 50/125um Multimode.
  - 2-2 Calbe Jacket : Gray Color, PVC Material.
3. Shrink Tube
4. Length : xM(FT)

Performance:

- a. Insertion Loss : <0.5 dB
- b. Fiber Extention :  $-0.05\mu\text{m} < H < +0.05\mu\text{m}$
- c.  $\phi$ 2.5mm Ferrule End-face Radius :  $8 < R < 25\text{mm}$
- d. Apex Offset : < 50 $\mu\text{m}$
- e. Increase in insertion loss after 500 mating : 0.2 dB Max
- f. Operating Temperature :  $-20^{\circ}\text{C}$  to  $+70^{\circ}\text{C}$
- g. Storage Temperature :  $-40^{\circ}\text{C}$  to  $+80^{\circ}\text{C}$

GENERAL TOLERANCE OF DIMENSIONS X.XXX $\pm$ 0.005 X.XX $\pm$ 0.05 X.X $\pm$ 0.1	DRAWING	06.JAN.2011	Abby	<b>Rotronic Co.,LTd.</b>
	CHECK	06.JAN.2011	MAER	
	APPROVAL	06.JAN.2011	YTY	
	DATE		NAME	ITEM NO.: 21.15.XXXX 有吊卡
SCALE	1/1 (A4)	UNIT	mm	DES.: SC to SC Duplex patch cord
		DRAWING NO. SFBJB022323xxxx06001(SA1)		
		DRAWING CLASSIFICATION	S	