



Datenblatt - Fiche technique - Data sheet

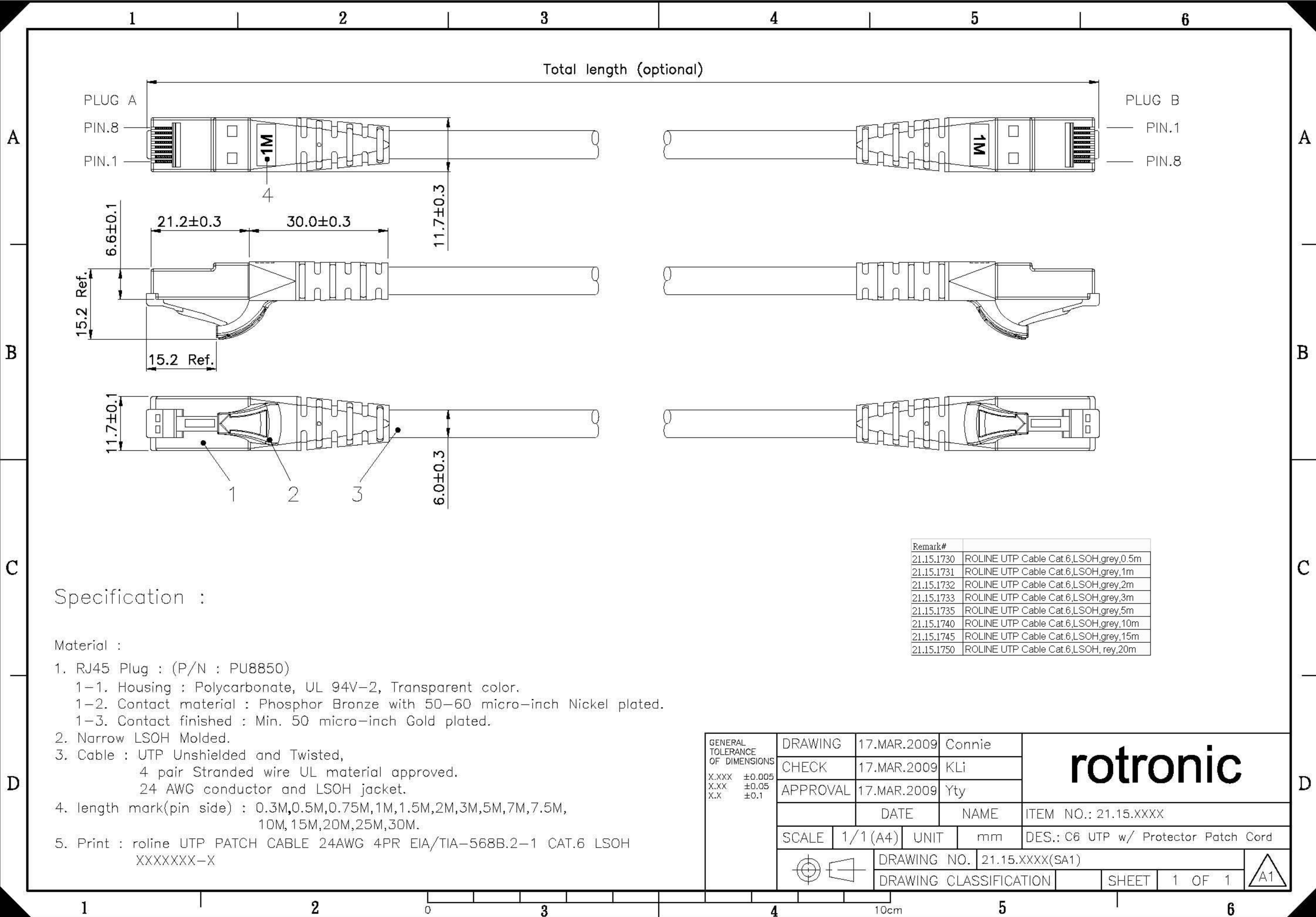
**21.15.1090**



ROLINE UTP-Patchkabel Kat.6, LSOH, blau, 10,0 m

Cordon ROLINE Cat.6 UTP LSOH, bleu, 10,0 m

ROLINE UTP Cable Cat.6, halogen-free, blue, 10.0 m



Total length (optional)

PLUG A  
PIN.8  
PIN.1

PLUG B  
PIN.1  
PIN.8

A

A

B

B

C

C

D

D

Specification :

Material :

1. RJ45 Plug : (P/N : PU8850)
  - 1-1. Housing : Polycarbonate, UL 94V-2, Transparent color.
  - 1-2. Contact material : Phosphor Bronze with 50-60 micro-inch Nickel plated.
  - 1-3. Contact finished : Min. 50 micro-inch Gold plated.
2. Narrow LSOH Molded.
3. Cable : UTP Unshielded and Twisted,
  - 4 pair Stranded wire UL material approved.
  - 24 AWG conductor and LSOH jacket.
4. length mark(pin side) : 0.3M,0.5M,0.75M,1M,1.5M,2M,3M,5M,7M,7.5M, 10M,15M,20M,25M,30M.
5. Print : roline UTP PATCH CABLE 24AWG 4PR EIA/TIA-568B.2-1 CAT.6 LSOH XXXXXXXX-X

Remark#	
21.15.1730	ROLINE UTP Cable Cat.6,LSOH,gre,0.5m
21.15.1731	ROLINE UTP Cable Cat.6,LSOH,gre,1m
21.15.1732	ROLINE UTP Cable Cat.6,LSOH,gre,2m
21.15.1733	ROLINE UTP Cable Cat.6,LSOH,gre,3m
21.15.1735	ROLINE UTP Cable Cat.6,LSOH,gre,5m
21.15.1740	ROLINE UTP Cable Cat.6,LSOH,gre,10m
21.15.1745	ROLINE UTP Cable Cat.6,LSOH,gre,15m
21.15.1750	ROLINE UTP Cable Cat.6,LSOH, gre,20m

GENERAL TOLERANCE OF DIMENSIONS X.XXX ±0.005 X.XX ±0.05 X.X ±0.1	DRAWING	17.MAR.2009	Connie	<b>rotronic</b>
	CHECK	17.MAR.2009	KLi	
	APPROVAL	17.MAR.2009	Yty	
		DATE	NAME	ITEM NO.: 21.15.XXXX
	SCALE 1/1 (A4)	UNIT mm	DES.: C6 UTP w/ Protector Patch Cord	
	DRAWING NO. 21.15.XXXX(SA1)		SHEET 1 OF 1	
	DRAWING CLASSIFICATION			