



Datenblatt - Fiche technique - Data sheet

11.03.1580



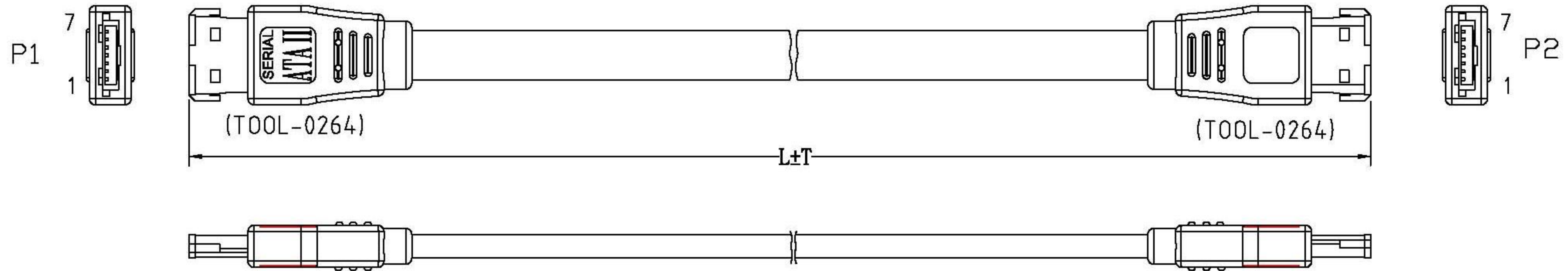
ROLINE Externes Festplattenkabel, eSATA 3.0 Gbit/s, 1,0m

ROLINE Câble externe pour disques durs eSATA 3.0 Gbit/s, 1,0 m

ROLINE External SATA 3.0 Gbit/s Cable, 1.0 m

ROHS-COMPLIANT

LTR	REV.	DESCRIPTION	DATE
△*2	B	ECR #070228-1 EDIT PACKING, PRINT WORDS	03/01/07'
△	C	ECR #080508-2 ADD BAR CODE NO.	05/08/08'



NOTE:

1.CABLE:UL2725 [26AWG(1/0.404)×2F INS:HD-PE ID:1.3×2.7+DRAIN WIRE
28AWG(1/0.32)×2C+AL/MY]×2C INNER JACKET:PVC OD:7.3×2.1mm
+AL/MY+BRAID(16/10/0.1)PVC JACKET, COLOR: BLACK(NK-K01),
OD:9.0×4.0mm, IMPEDANCE: 100 OHM.

2.CONNECTOR:

P1&P2:SATA II 7P RIVETING TYPE PBT BLACK G/F W/METAL SHELL

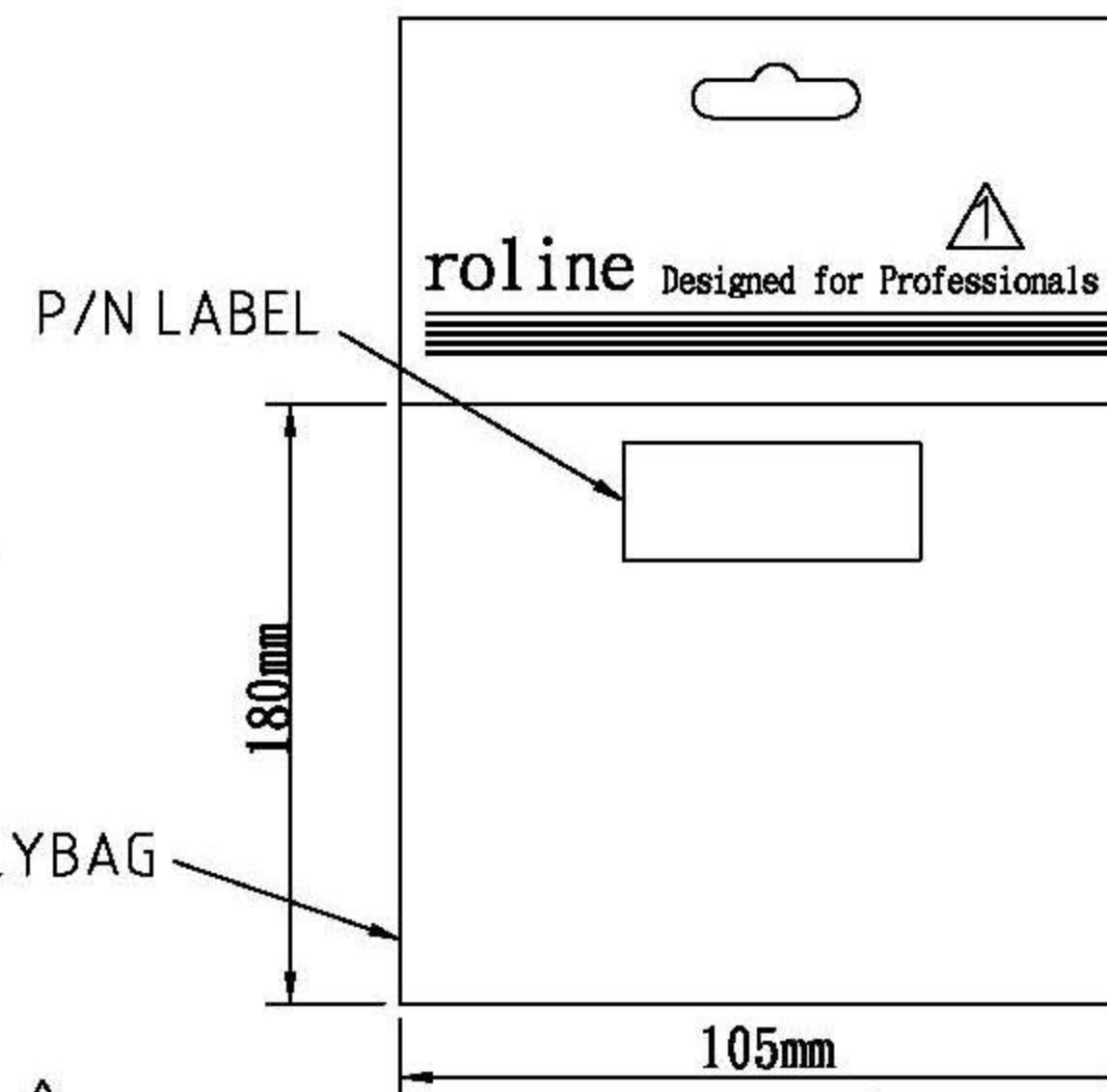
3.SHIELD:COPPER-FOIL

4.HOOD:MOLDED TYPE, PVC 45P, COLOR:BLACK(NK-K01)

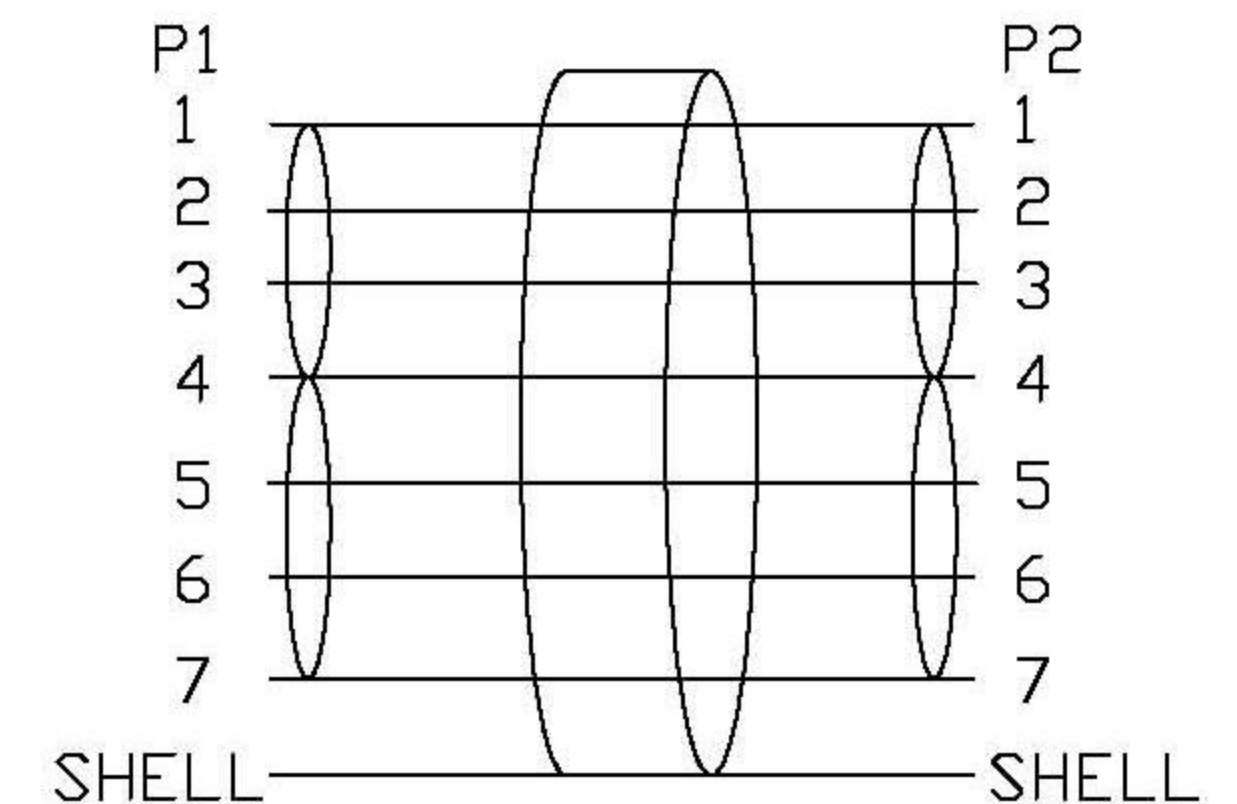
5.TEST REQUEST:

100% OPEN SHORT MIS WIRE TEST
CONTACT RESISTANCE 3 ohm MAX.
INSULATION RESISTANCE 10M ohm MIN.
HI-POT DC300V/0.01SEC.

6.PACKING:EACH PC / POLYBAG+ROLINE HEADER CARD+EAN STICKER. △



PIN ASSIGNMENT



△	140-1315-2	11.03.1580	1000	20	7611990168538
	140-1315-1	11.03.1575	500	10	7611990168521
	DWG	P/N	L(mm)	T(mm)	BAR CODE NO.

Tolerance	Inch	M/M
.X	.015	.30
.XX	.010	.10
.XXX	.005	.05

Draw
FANNIE 05/08/08'

Check

Engr

ROTRONIC CO., LTD.

Title
SERIAL ATA II SINGAL EXTERNAL CABLE

Customer P/N

App'd Customer: T-RAG

Scale NONE Units m/m Third Angle Projection

Dwg No. 140-1315 REV:C Sheet 1/1