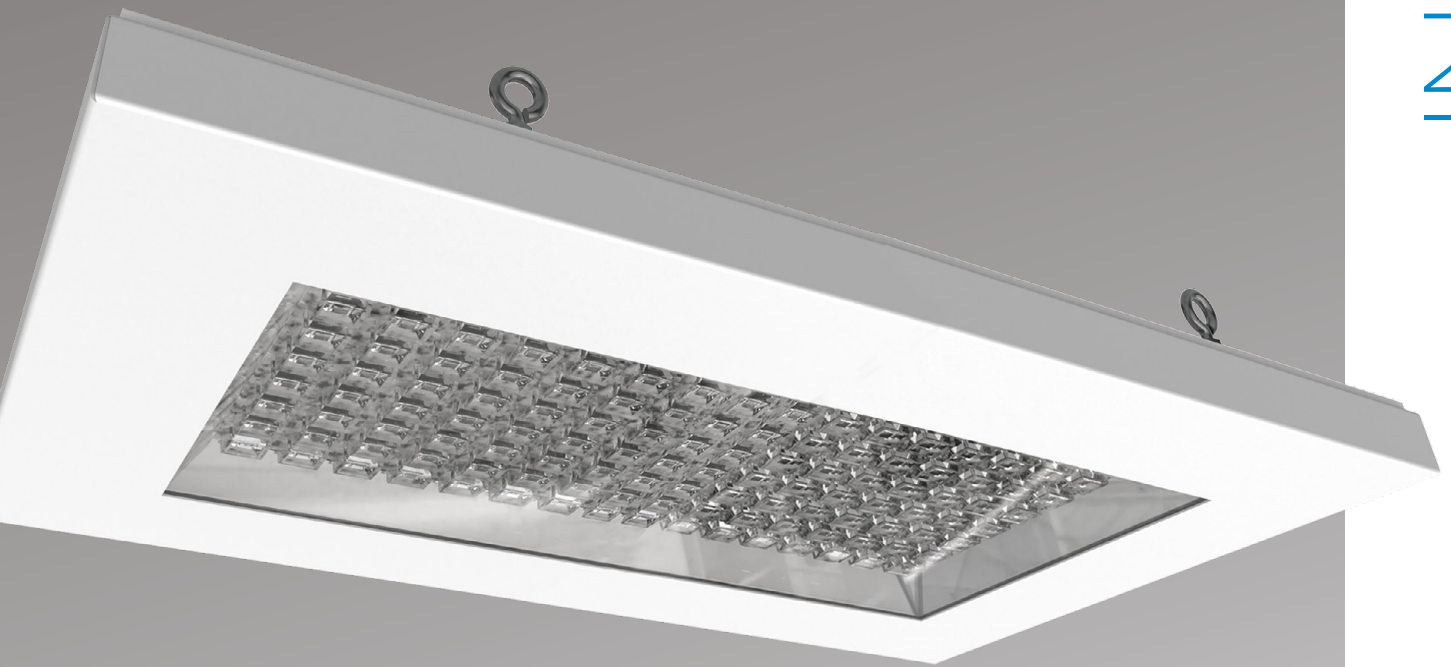


# TERRALITE ECO

*"Heavy duty, for harsh environments"*

- laboratories • gas stations • warehouses • production and other industrial areas •
- sport and shopping centres •



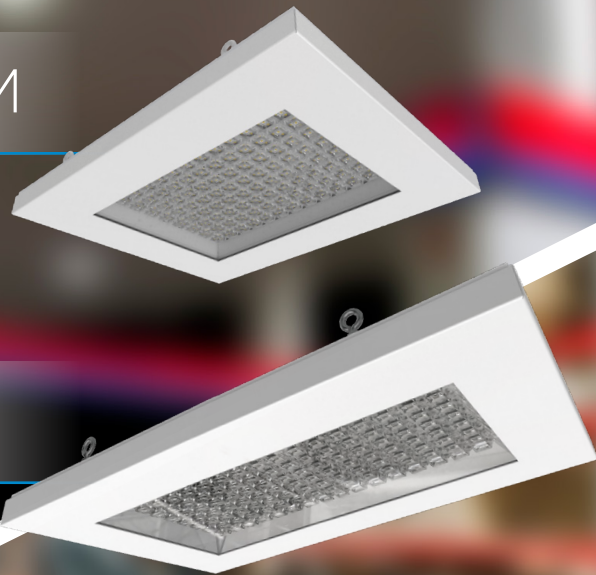
- up to 30.000 lm output
- Heavy duty robust housing with tempered glass
- Extreme environment resistant
- 4 mounting options
- Industry 5.0 compliant

INDUSTRIAL

**GRAH**<sup>®</sup>  
LED LIGHTING

## TERRALITE ECO S/M

## TERRALITE ECO L



## TECHNICAL SPECIFICATIONS

## TERRALITE ECO S / M / L

|                              |   |
|------------------------------|---|
| Supply voltage range:        | 220-240 V, 50 / 60 Hz   |
| Consumption:                 | 73 W / 276 W  |
| Power Factor:                | >0,95   |
| Temperature range:           | -20 °C / +40 °C   |
| Working temperature at Ta25: | +55 °C  |
| Light guiding system:        | PMMA lenses   |
| Optics:                      | W, O, WWW   |
| Power reduction:             | ON/OFF, DALI 2.0  |
| Light source:                | High power LED  |
| Colour temperature:          | 4000 K (3000 K, 5000 K on request)  |
| System efficacy:             | Up to 121 lm/W  |
| LED Lifetime:                | >100.000 hours, L90 @ Ta = 25 °C  |
| Colour Rendering Index:      | CRI >80   |
| Luminous flux:               | 8.400 / 30.000 lm   |
| Appliance class:             | I   |
| Housing material:            | Aluminium / steel   |
| Sealing material:            | Silicone, heat resistant  |
| Cover material:              | TG - Tempered glass / PC  |
| Housing colour:              | RAL 9016 fine texture (other colours on request)                              |
| Ingress protection class:    | IP65  |
| Impact resistance:           | IK08, IK10 on request   |
| Mounting options:            | suspended, ceiling, recessed, wall  |
| Suggested mounting height:   | Minimal 4 m   |
| Dimension (L x H x W):       | ECO S 390 x 380 x 74 mm<br>ECO M 480 x 380 x 74 mm<br>ECO L 687 x 390 x 74 mm |
| Net weight:                  | ECO S 7,5 kg, ECO M 8,5 kg, ECO L 13 kg                                       |

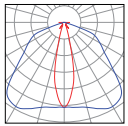


# FEATURES

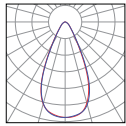
## TERRALITE ECO multi mounting fast fitting high bay lamp with 3 light distributions

TERRALITE is an ECO friendly lamp with new light distribution design to illuminate all areas very efficiently. With new optics systems for 3 different applications. TERRALITE comes with the latest high power LED chip and advanced optical control with great colour uniformity and reduced glare. Simple and very efficient Industrial solution.

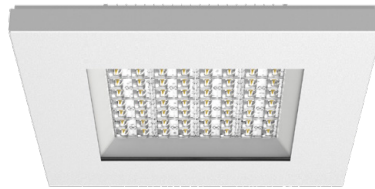
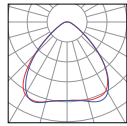
O - oval



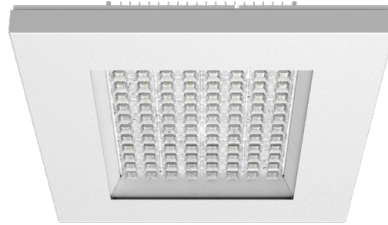
W - wide



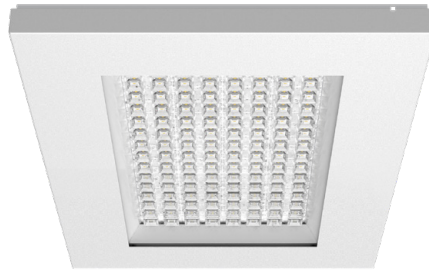
WWW - extra wide



Terralite ECO S



Terralite ECO M



Terralite ECO L

With luminous flux from 8.400 lm to 30.000 lm, robust housing for extreme temperatures

Industrial buildings require a specific type of illumination, able to withstand the strain of difficult working conditions.

The luminaires used in such buildings have to fulfil very strict technical requirements due to a particularly unfriendly work environment.

They're exposed to a variety of damaging factors, potentially able to affect their proper function.

Each luminaire in the GRAH industrial product portfolio is designed to meet those criteria.

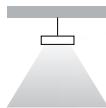
Designed for:

- gas stations
- warehouses
- production areas
- shopping centres
- sport facilities
- industrial areas

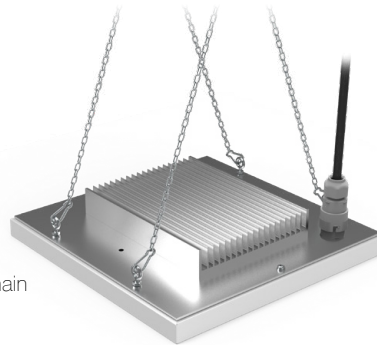
## Mounting options

Multiple mounting solutions for every environment.

S - Suspended



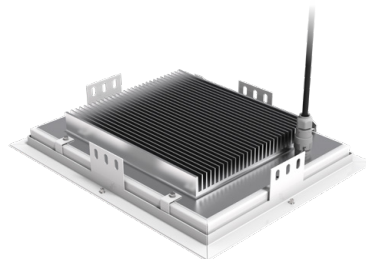
Suspension chain  
(accessories)



W - Wall



R - Recessed



C - Ceiling



# COMMERCIAL SPECIFICATIONS

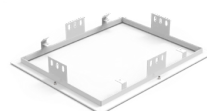
ID: 2 1 0 2 - 0 0 8 6 - 1 1 9 4 - 3 3 9 1

| Code Name         | Code Mounting | Code Regulat. | Code Lum. flux [lm] | Power [W] | Code Optics | Code Colour Temp.[K] | Code IP | Code IK | Code Size |         |      |      |     |
|-------------------|---------------|---------------|---------------------|-----------|-------------|----------------------|---------|---------|-----------|---------|------|------|-----|
| 210 TERRALITE ECO | 2 Ceiling     | 0 ON/OFF      | 086 8600            | 73        | 19 W        | 3 3000*              | 3 44    | 3 08    | 1 S       |         |      |      |     |
|                   |               |               | 115 11500           | 96        | 22 O        |                      |         |         |           |         |      |      |     |
|                   |               |               | 148 14800           | 138       | 22 O        |                      |         |         |           |         |      |      |     |
|                   | 3 Recessed    | 3 DALI        | 084 8400            | 73        | 30 WWW      |                      |         |         | 4 4000    | 5 65    | 5 10 | 2 M  |     |
|                   |               |               | 112 11200           | 96        | 30 WWW      |                      |         |         |           |         |      |      |     |
|                   |               |               | 145 14500           | 138       | 30 WWW      |                      |         |         |           |         |      |      |     |
|                   | 4 Suspended   | 3 DALI        | 172 17200           | 142       | 19 W        |                      |         |         | 5 5000*   | 5 65    | 5 10 | 3 L  |     |
|                   |               |               | 222 22200           | 205       | 22 O        |                      |         |         |           |         |      |      |     |
|                   |               |               | 168 16800           | 142       | 30 WWW      |                      |         |         |           |         |      |      |     |
|                   | 6 Wall        | 3 DALI        | 218 21800           | 205       | 19 W        |                      |         |         | 5 5000*   | 5 65    | 5 10 | 3 L  |     |
|                   |               |               | 230 23000           | 192       | 22 O        |                      |         |         |           |         |      |      |     |
|                   |               |               | 300 30000           | 276       | 30 WWW      |                      |         |         |           |         |      |      |     |
|                   |               |               |                     | 224 22400 | 192         |                      |         |         | 30 WWW    | 5 5000* | 5 65 | 5 10 | 3 L |
|                   |               |               |                     | 290 29000 | 276         |                      |         |         | 30 WWW    |         |      |      |     |

\*Luminous flux for 3000 K and 5000 K may vary, please contact our Sales department for detailed information.

| Code                | Accessories           |
|---------------------|-----------------------|
| 3999-0040-0000-0001 | Suspension chain 1 m* |
| ...                 | ...                   |
| 3999-0040-0000-0009 | Suspension chain 9 m  |
| 3999-0083-0000-0000 | Carabiner set 4 pcs   |

\*for suspension mounting 2 or 4 chains needed



Recessed



Ceiling



Wall



Cover for suspended



GRAH LIGHTING d.o.o.  
Zadružna ulica 6,  
SI-2310 Slovenska Bistrica,  
Slovenia, EU

+386 82 801 424  
info@grahlighting.com  
[www.grahlighting.com](http://www.grahlighting.com)